

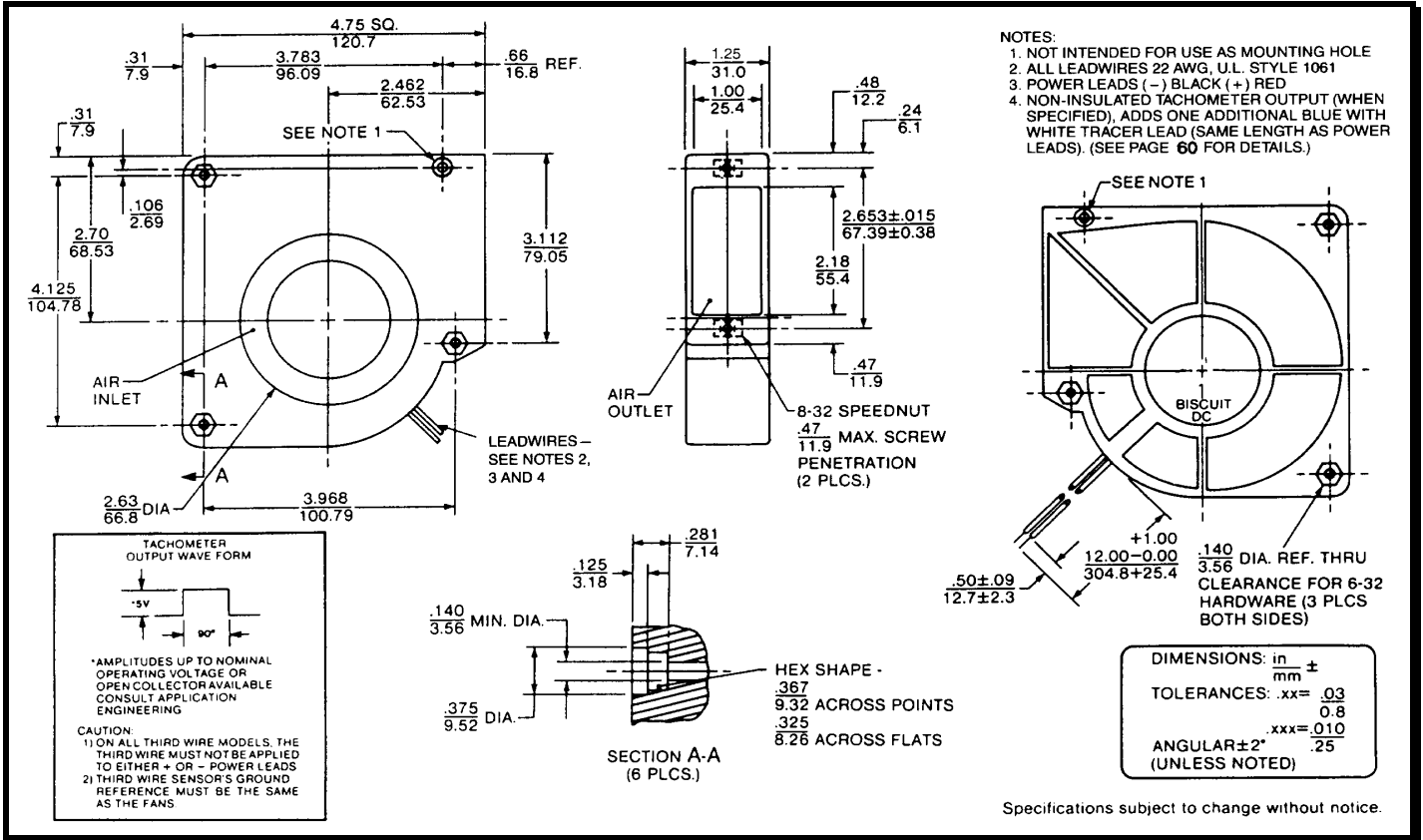
# SPECIFICATIONS

**Model Number:** BD24B3  
**Part Number:** 19030621A

**Rev:** 01  
**April 10, 2017**



## Mechanical Drawing:



## Motor:

Nominal Voltage = 24 vdc  
 Operating Voltage Range = 12 - 28 vdc  
 Nominal Running Current = 0.48 amps  
 Locked Rotor Current = 1.0 amps  
 Running Power = 11.5 watts  
 Average Speed = 3040 rpm  
 Bearings = Ball  
 Air Flow = 24.3 cfm  
 Noise = 51.2

## Construction:

Venturi: Plastic, Black, UL94V-0  
 Propeller: Plastic, Black, UL94V-0

## Agency Approvals:

UL, CUL, CE

## Life Expectancy:

This fan is designed for continuous duty life of 52,000 hours at 70°C

## Additional Features:

Brushless DC Motor  
 Polarity Protected  
 Locked Rotor Protection  
 Automatic Restart Capability  
 Operating Temperature: -10°C to +70°C  
 Storage Temperature: -40°C to +85°C

## Termination:

12" Lead wires, 22 AWG, UL1061

Red: Power (+)

Black: Return (-)

PQ Curve:

